

What's Down the Track with Aurizon?

Anna Dartnell - General Manager Bulk



Aurizon Western Australia

Key metrics



PEOPLE

~600 operational and support staff



SERVICES PER DAY

55 services run everyday



ROLLINGSTOCK

78 active locomotives

- 24 Standard Gauge
- 52 Narrow Gauge



WAGONS

1621 active wagons



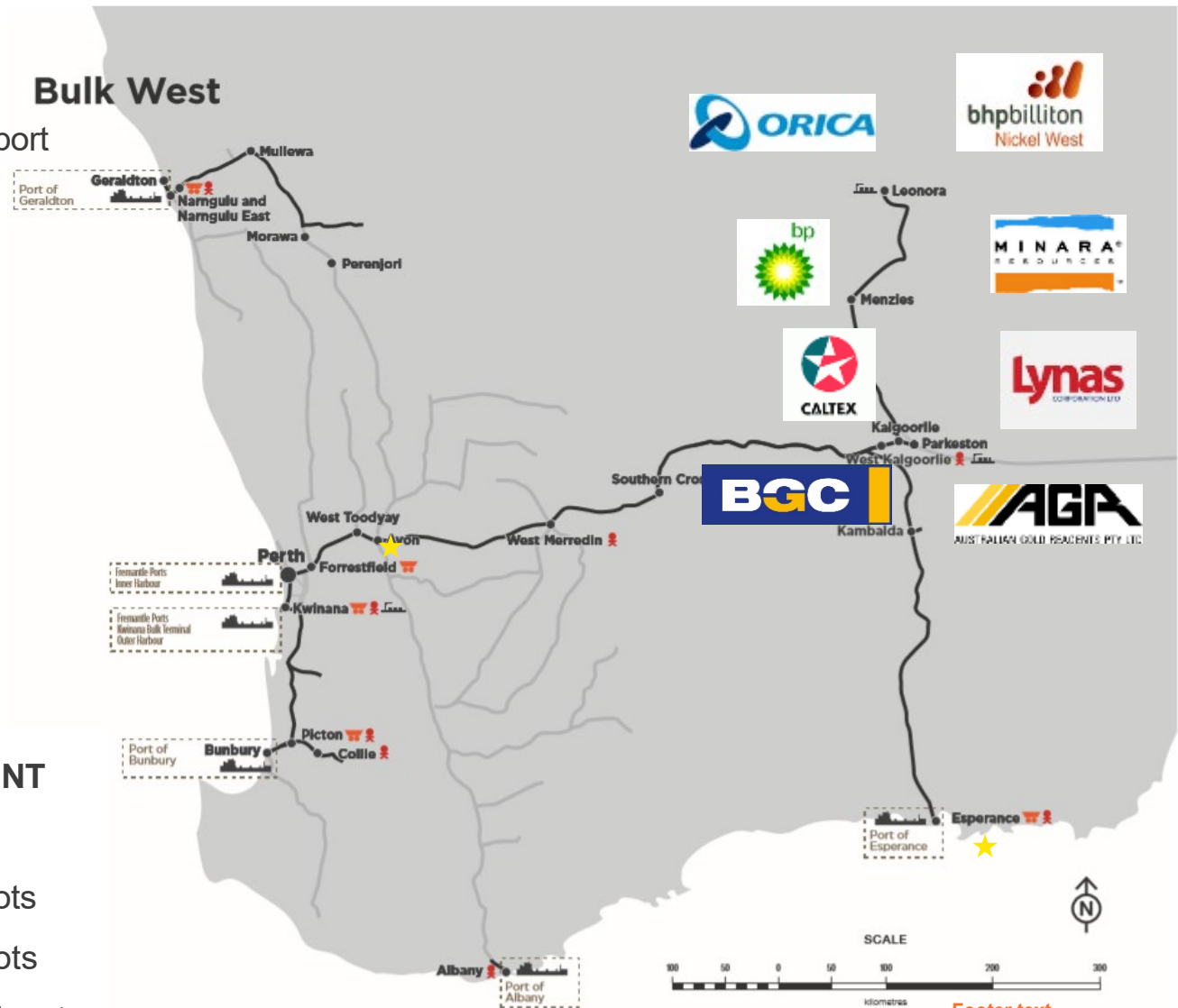
OPERATIONAL FOOTPRINT

8 active train crew depots

- 2 inactive train crew depots

5 active maintenance depots

- 2 inactive maintenance depots



Central West Operations

Significant Kalgoorlie Footprint



Aurizon's Central West



Home of the Kalgoorlie Freighter

1. West Kalgoorlie Depot
2. West Kalgoorlie Container Depot
3. Leonora Bulk Terminal
4. Esperance Depot
5. Meriden Depot



140 People!



What's Down the Track?



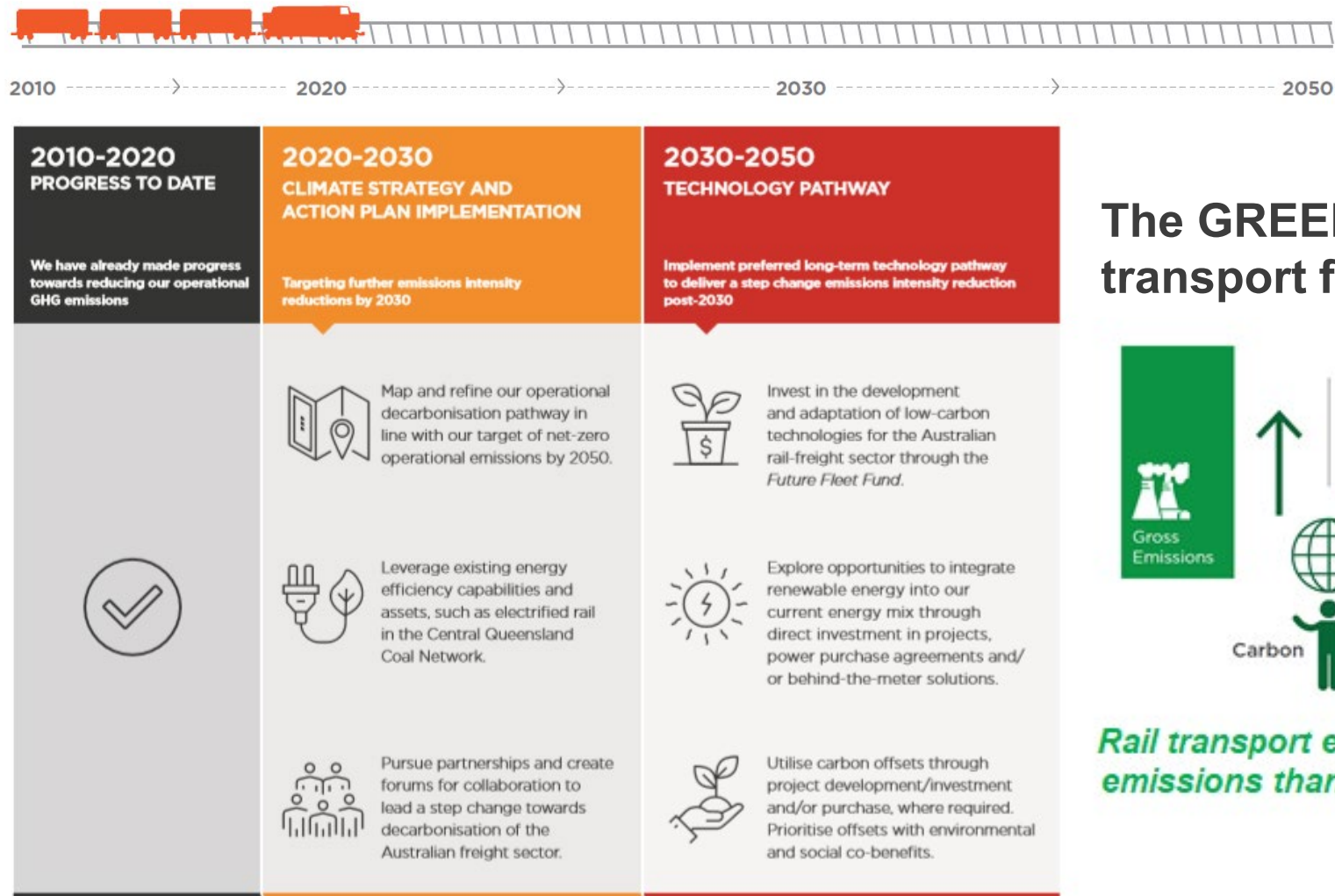
Delivering Growth Commodities

- Strong Gold demand requiring reliable supply chains for industry inputs
- Taking Bulk Loads & Dangerous Goods off our regional roads
- Global energy markets continue to drive demand for Goldfields minerals such as;
 - Nickel
 - Cobalt
 - Copper
 - Lithium
- Global population growth & food consumption driving long term demand for fertilizers - unlocks significant opportunity in the goldfields region

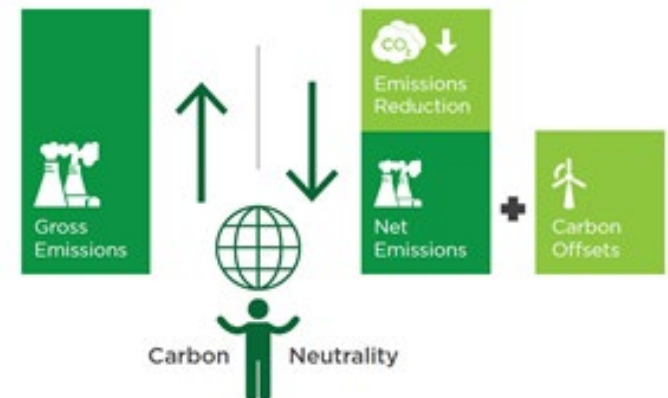
Climate Strategy in Action

Tracking Towards Net-Zero Operational Emissions

We are driving operational decarbonisation through our *Tracking Towards Net-Zero Operational Emissions* initiatives.



The GREEN future of transport freight



Rail transport emits 75% fewer emissions than road transport

Investment in Our Local Community

Aurizon have funded over \$140,000 worth of projects in the Goldfields region through our Community Giving Fund.



Applications now
open in **Kalgoorlie**



Aurizon operator Cheryl Culshaw with Ryder Logie, 5 and Goodstart Early Learning Centre educator Jessica Black. Picture: Tegan Guthrie

New garden to help kids blossom

TEGAN GUTHRIE

A previously underused space at an early learning centre will soon be flourishing with fruits, vegetables and herbs thanks to a community garden initiative.

Recycled railway sleepers have been donated and repurposed to be used as garden beds for Goodstart Early Learning Centre's new garden.

As well as benefiting the community, centre director Louise Munro said the garden would provide another avenue of

learning for the children. "We wanted to have something where we could give back to the community and also help teach our children about sustainability," she said.

"The children in the centre have been germinating seeds and learning about the life cycle of seeds and where our food comes as opposed to just being from the shop.

The project was supported by Aurizon, Little Loads, and Adapt a Lift, which donated items. The seeds will be planted

during an opening ceremony on Saturday, September 5, which the community is welcome to attend and bring along a seedling to plant.

Once everything is planted, the children will take over daily care of the gardens, helping to water and pick the vegetables when they are ready.

The opening will take place from 9am with a community breakfast provided and centre tours offered for anyone wanting to go on the waitlist.

